



DESIGN *PORTFOLIO*



BY: KRISTINA GEROUX







TOWN CHINESE RESTAURANT.....2-5
 UPPER CRUST BAKERY.....6-9
 KEY HIGH POLY.....11
 AUDREY.....13
 PHOTOGRAPHY.....14-15
 SCI-FI MAGAZINE SPREAD.....17
 AMETHYST BAY.....19
 HEART.....21
 HALLOWEEN FLYER.....23
 F-16 FIGHTER JET.....25
 DECORATIVE MOON.....27
 POTION BOTTLE.....29
 RESUME.....30





< TOWN MENU COVER
(FRONT AND BACK)
SNHU 2020



TOWN MENU INSIDE >
SNHU 2020



2





OUR VISION

TOWN combines a variety of chinese cuisine to excite and delight our customers

Our vision for the future is to create experiential dining that is more than just a night out. We aim to bring quality and luxury across all aspects of our brand

The approach of TOWN is to develop our brand with the understanding of both our culture and consumer insights. Within our vision always lives the promise of inspiring creativity, conversation and quality.

Our audience is a high-end clientele who values a dining experience. The age range of our customers are from early 30s-60s. We would like them to come back for both personal dining

Visit Us

Location
444 Main St.
Somewhere, WA 12345

Phone Number
(123)443-5789

Website
www.townchinese.com

  Need? Book your reservation on our Facebook page!

福 TOWN

Authentic Chinese Cuisine in luxurious surroundings

< TOWN BROCHURE COVER (FRONT AND BACK)
SNHU 2020



TOWN BROCHURE >
INSIDE
SNHU 2020

Our Story

Town is a high-end fine dining restaurant which serves traditional chinese cuisine with an added flare. Spanning 4 generations, TOWN prides itself on using the finest organic ingredients available with no added preservatives or MSG, giving you the most authentic experience possible! Part of our mission statement is to bring quality, style and the wish for good fortune to all of our guests!

Popular Appetizers & Mains

- Steamed Bun w/BBQ Pork
- BBQ Chicken Feet
- Fish & Eggplant Hotpot
- Steamed Fish with Veggies
- Cashew Chicken
- Roasted Duck with Peaches & Veggies

Our Services

Here at TOWN, we strive to appeal to and accommodate both future and current clients looking for a beautiful & quiet location to hold anything from wedding receptions to business meetings. Our Up TOWN dining room seats up to 50 guests with seating also available on our outdoor terrace. Catering services are available on location. Call now or visit our website (details on the back).



3





< TOWN MENU COVER
(FRONT AND BACK)
SNHU 2020



^ TOWN MENU COVER
(FRONT AND BACK)
SNHU 2020

4





< TOWN MENU
WEBSITE DESIGN
SNHU 2020

TOWN CONTACT >
WEBSITE DESIGN
SNHU 2020

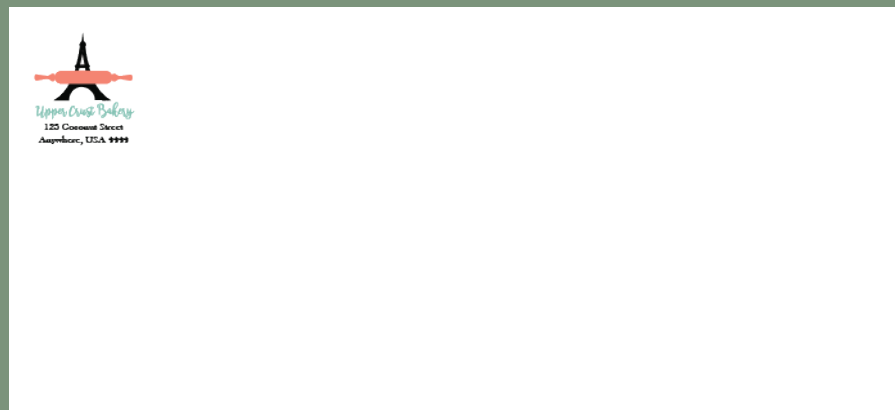




< UPPER CRUST BAKERY
BUSINESS CARD
SNHU 2020

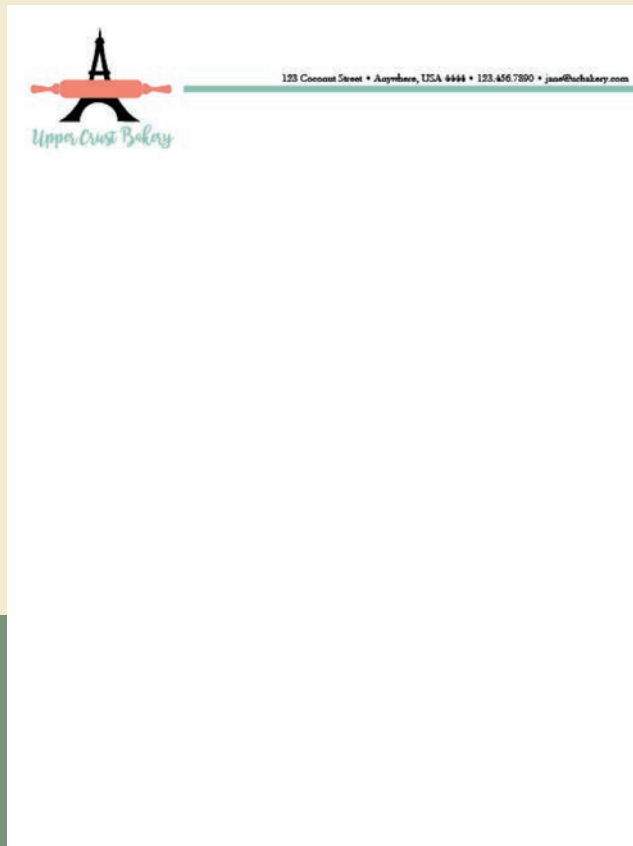


UPPER CRUST BAKERY >
ENVELOPE
SNHU 2020



6

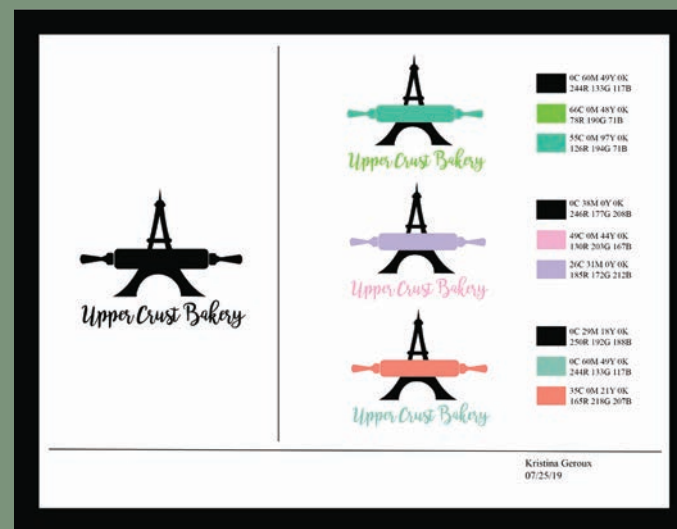




< UPPER CRUST BAKERY
LETTERHEAD
SNHU 2020

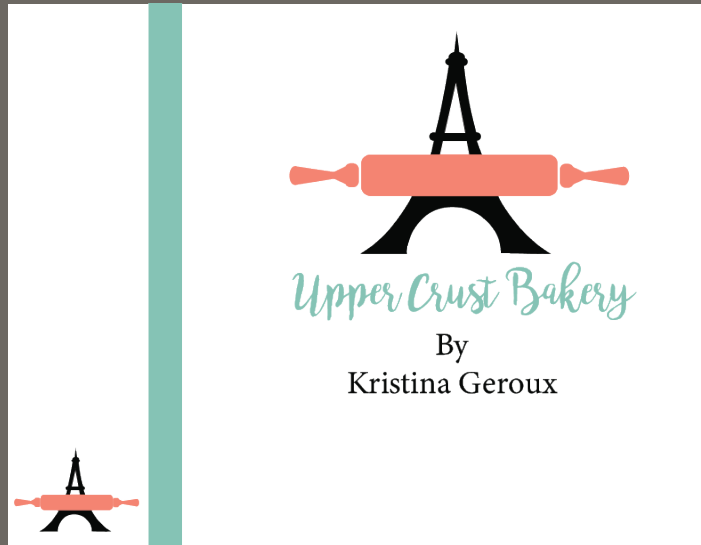


UPPER CRUST BAKERY >
COLOR CHART
SNHU 2020



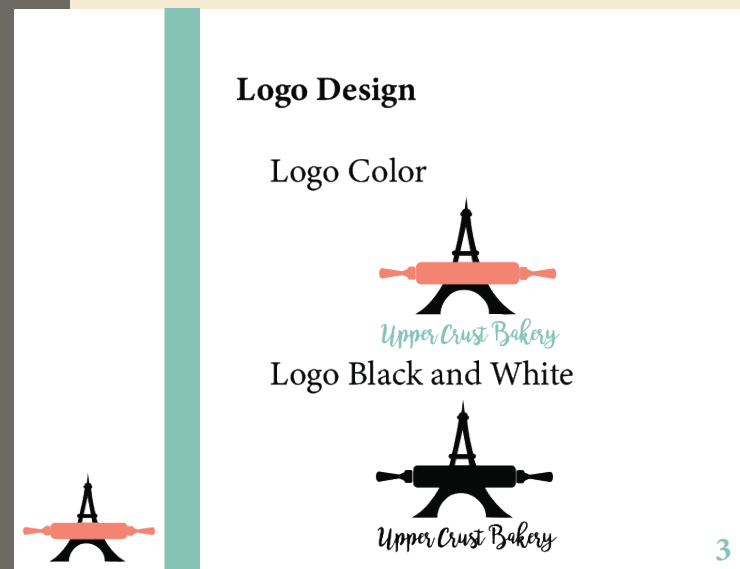
7





< UPPER CRUST BAKERY
 LOGO DESIGN
 SNHU 2020

UPPER CRUST BAKERY >
 LOGO DESIGN COLORS
 SNHU 2020



8





Logo Usage

Appropriate



Inappropriate



5

< UPPER CRUST BAKERY
LOGO USAGE
SNHU 2020

UPPER CRUST BAKERY >
TYPE AND COLOR
SPECIFICATIONS
SNHU 2020

Type Specifications

Bromello Regular

Minion Variable Concept

Color Specifications



Upper Crust Bakery

0C 29M 18Y 0K
250R 192G 188B

35C 0M 21Y 0K
165R 218G 207B

0C 60M 49Y 0K
244R 133G 117B

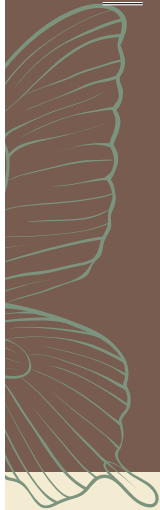
4

9



10





< KEY
HIGH-POLY EDGED FACES
SNHU 2020



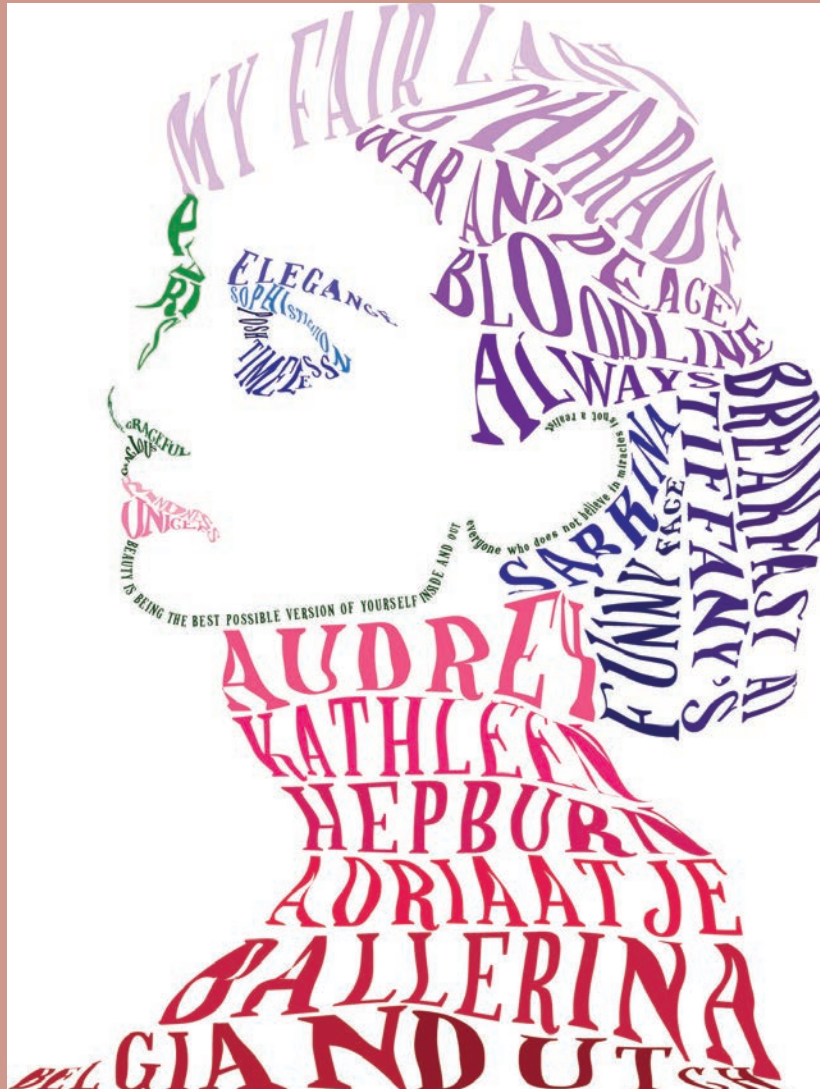
KEY >
HIGH-POLY DETAIL
SNHU 2020





12





< AUDREY HEPBURN
WORD CLOUD
SNHU 2020

13





< IMAGE STUDY
PHOTOGRAPHY
SNHU 2020

COUNTRY ROAD >
PHOTOGRAPHY
SNHU 2020





< AVERY
PHOTOGRAPHY
SNHU 2020



1/160 sec at f/4.0



1/125 sec at f/2.8

IMAGE STUDY 2 >
PHOTOGRAPHY
SNHU 2020



1/400 sec at f/11



1/250 sec at f/11



16





ARE THE PLANETS INHABITED?

E. WALTER MAUNDER, F.R.A.S.
SUPERINTENDENT OF THE SOLAR DEPARTMENT, ROYAL OBSERVATORY GREENWICH



THE QUESTION STATED – Part 1

THE first thought that men had concerning the heavenly bodies was an obvious one: they were lights. There was a greater light to rule the day; a lesser light to rule the night; and there were the stars also.

In those days there seemed an immense difference between the earth upon which men stood, and the bright objects that shone down upon it from the heavens above. The earth seemed to be vast, dark, and motionless; the celestial lights seemed to be small, and moved, and shone. The earth was then regarded as the fixed centre of the universe, but the Copernican theory has since deprived it of this pride of place. Yet from another point of view the new conception of its position involves a promotion, since the earth itself is now regarded as a heavenly body of the same order as some of those which shine down upon us.

SCI-FI MAGAZINE AD 2 >
SNHU 2020

< SCI-FI MAGAZINE AD 1
SNHU 2020

It is amongst them, and it too moves and shines—shines, as some of them do, by reflecting the light of the sun. Could we transport ourselves to a neighbouring world, the earth would seem a star, not distinguishable in kind from the rest.

But as men realized this, they began to ask: "Since this world from a distant standpoint must appear as a star, would not a star, if we could get near enough to it, show itself also as a world? This world seems with life; above all, it is the home of human life. Men and women, gifted with feeling, intelligence, and character, look upward from its surface and watch the shining members of the heavenly host. Are some of these the home of beings gifted with like powers, who watch in their turn the movements of that shining point which is our world?"

This is the meaning of the controversy on the Plurality of Worlds which excited so much interest some sixty years ago, and has been with us more or less ever since. It is the desire to recognize the presence in the orbs around us of beings like ourselves, possessed of personality and intelligence, lodged in an organic body.

This is what is meant when we speak of a world being "inhabited." It would not, for example, at all content us if we could ascertain that Jupiter was covered by a shoreless ocean, rich in every variety of fish, or that the hard rocks of the Moon were delicately veiled by lichens. Just as no richness of vegetation and no fulness and complexity of animal life would justify an explorer in describing some land that he had discovered as being "inhabited" if no men were there, so we cannot rightly speak of any other world as being "inhabited" if it is not the home of intelligent life.

If the life did not rise above the level of algae or oysters, the globe on which they flourish would be antihabitual in our estimation, and its chief interest would lie in the possibility that in the course of ages life might change its forms and develop hereafter into manifestations with which we could claim a nearer kinship.

On the other hand, of necessity we are precluded from extending our enquiry to the case of disembodied intelligences, if such be conceivable possible. All created existences must be conditioned, but if we have no knowledge of what those conditions may be, or means for attaining such knowledge, we cannot discuss them.

Nothing can be affirmed, nothing denied, concerning the possibility of intelligences existing on the Moon or even in the Sun if we are unable to ascertain under what limitations those particular intelligences subsist. Gnomes, sylphs, elves, and fairies, and all similar conceptions, escape the possibility of discussion by our ignorance of their properties. As nothing can be asserted of them they remain beyond investigation, as they are beyond sight and touch.

The only beings, then, the presence of which would justify us in regarding another world as "inhabited" are such as would justify us in applying that term to a part of our own world. They must possess intelligence and consciousness on the one hand; on the other, they must likewise have corporeal form.

True, the form might be imagined as different from that we possess; but, as with ourselves, the intelligent spirit must be lodged in and expressed by a living material body. Our enquiry is thus rendered a physical one; it is the necessities of the living body that must guide us in it; a world unsuited for living organisms is not, in the sense of this enquiry, a "habitable" world.

The discussion, as it was carried on sixty years ago by Dr. Whewell and Sir David Brewster, was essentially a metaphysical, almost a theological one, and it was chiefly considered in its supposed relationship to certain religious conceptions. It was urged that it was derogatory to the wisdom and goodness of the Creator to suppose that He would have created so many great and glorious orbs without having a definite purpose in so doing, and that the only purpose for which a world could be made was that it might be inhabited. So, again, when Dr. A. R. Wallace revived the discussion in 1903, he clearly had a theological purpose in his opening paper, though he was taking the opposite view from that held by Brewster half a century earlier.

For myself, if there be any theological significance attaching to the solving of this problem, I do not know what it is. If we decide that there are very many inhabited worlds, or that there are few, or that there is but one—our own—I fail to see how it should modify our religious beliefs. For example, explorers have made their way across the Antarctic continent to the South Pole but have found no "inhabitants" there.

Has this fact any theological bearing? or if, on the contrary, a race of men had been discovered there, what change would it have made in the theological position of anyone? And if this be, so with regard to a new continent on this earth, why should it be different with regard to the continents of another planet?

The problem therefore seems not to be theological or metaphysical, but purely physical. We have simply to ask with regard to each heavenly body which we pass in review: "Are its physical conditions, so far as we can ascertain them, such as would render the maintenance of life possible upon it?" The question is not at all as to how life is generated on a world, but as to whether, if once in action on a particular world, its activities could be carried on.

"If we decide that there are very many inhabited worlds, or that there are few, or that there is but one—our own—I fail to see how it should modify our religious beliefs."

17



18





AMETHYST BAY
Resort & Spa

RELAX **RENEW** **REWIND**

EXCURSION **TRANQUILITY** **TEE-TIME**

Experience our 7-day All-Inclusive Bundle at 30% off when you book for the month of October.
Choose from one of our 3 package add-ons as shown above at a 10% discount when you make your reservation!

716 Amethyst Bay Boulevard, St. Thomas, VI 00802 • 866-323-7070

< AMETHYST BAY
MAGAZINE AD
SNHU 2020

AMETHYST BAY >
BANNER
SNHU 2020

AMETHYST BAY
Resort & Spa

716 Amethyst Bay Boulevard, St. Thomas, VI 00802
866-323-7070

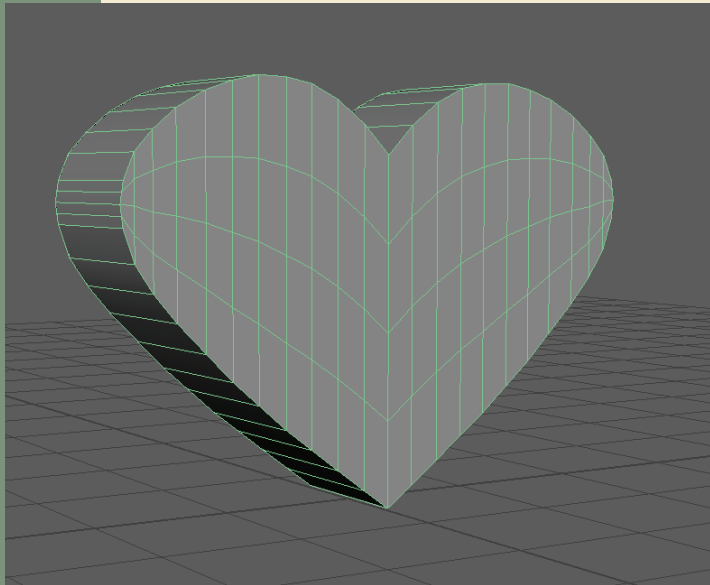
TRANQUILITY BY DESIGN





20

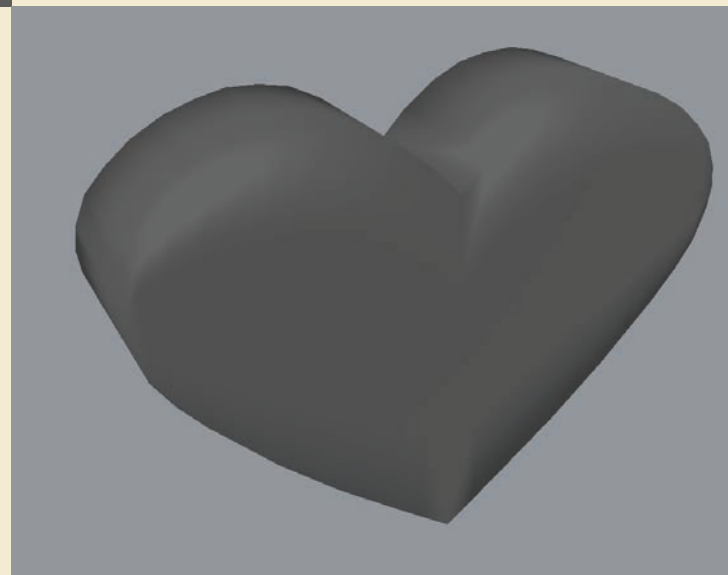




< HEART
LOW-POLY EDGED FACES
MAYA
SNHU 2021



HEART >
DETAIL
MAYA
SNHU 2020





22





HALLOWEEN FLYER >
BOGEY DOPE CAFE
SNHU 2020




HAPPY HALLOWEEN!

COME JOIN THE BOOOSTER CLUB IN OUR FUN OCTOBER EVENTS!

WADS COSTUME CONTEST

COME JOIN US IN A FUN FILLED DAY OF DRESSING UP FOR THE SPOOKIEST DAY OF THE YEAR! THE 1ST PLACE WINNERS FOR SPOOKIEST AND FUNNIEST COSTUMES WILL GET ONE FREE COFFEE PLUS A \$20 GIFT CARD!

WHEN: 28OCT2020



HAUNTED WADS CHILI COOK-OFF

COME AND SHARE YOUR AMAZING CHILI SKILLS! THERE IS A BOO-TACULAR PRIZE FOR OUR 1ST, 2ND AND 3RD PLACE WINNERS!

WHEN: 28OCT2020 @ 1130
WHERE: C-LEVEL
FEE: \$5 PER PERSON

SPINE-TINGLING BREAKFAST

START YOUR MORNING OFF RIGHT WITH OUR YUMMY HOME COOKED FOOD! ★

WHEN: 30OCT2020
WHERE: BOGEY DOPE CAFE
FEE: \$5 PER PLATE

★

FREE DONUTS WILL BE SERVED IN THE ECT ON 28OCT2020

GET A FREE TRICK-OR-TREAT GOODIE BAG WITH THE PURCHASE OF A COFFEE UNTIL 31OCT!



WE ARE NOW SERVING PUMKIN SPICE LATTES THROUGH THE END OF THE YEAR!





24





< F-16 FIGHTER JET
SNHU 2020

25





26





DECORATIVE MOON >
 MUDBOX
 SNHU 2021



27





28





DECORATIVE MOON
MUDBOX
SNHU 2021 ✓





Education

Southern New Hampshire University	2018-Present
• Bachelor of Arts in Graphic Design and Media Arts and Animation	
Mt Hood Community College	2004-2006
• Associate of Arts in General Studies	

Work Experience

United States Air Force	2017-Present
• Command and Control Battle Management Operations (C2BMO) Tracking Technician	
	2014-2017
• Dental Assistant	
Banfield Pet Hospital	2007-2017
• Veterinary Assistant	

Skills

Adobe Illustrator • Adobe Photoshop • Adobe InDesign
 Adobe Animate • Adobe Dreamweaver • Adobe Animate
 Adobe Media Encoder • Adobe Premiere Pro • Acrobat DC
 Brackets • Autodesk 3ds Max • PowerPoint • Microsoft Excel
 Microsoft Word

Contact

E-Mail
 • wiese.kristina@gmail.com
 Phone
 • 253-792-9068

